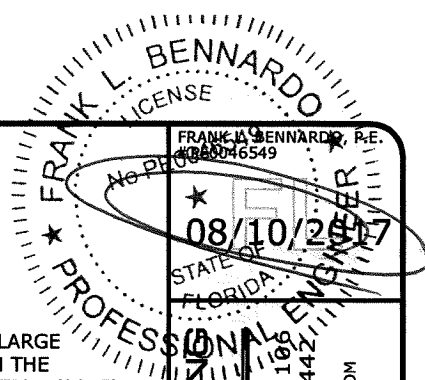




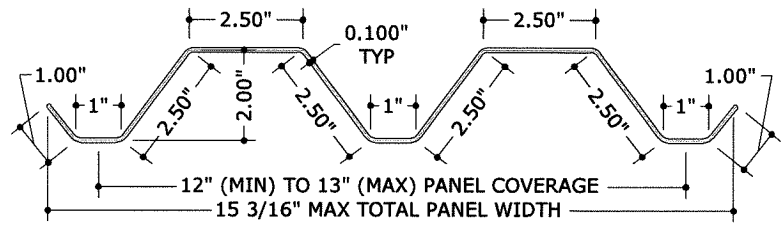
POLYCARBONATE STORM PANELS (HVHZ)



FRANK L. BENNARDO, P.E.
 No. 08102017
 STATE OF FLORIDA
 PROFESSIONAL ENGINEER
ENGINEERING EXPRESS
 CORPORATE OFFICE:
 160 SW 12th AVE, SUITE 106
 DEERFIELD BEACH, FL 33442
 P: (954) 354-0660 F: (954) 354-0443
 E: HELLO@ENGINEERINGEXPRESS.COM
 CERT OF AUTH #9885

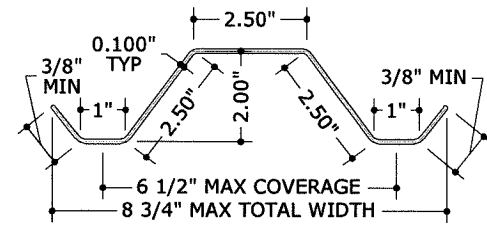
GENERAL NOTES:

- THIS SYSTEM HAS BEEN TESTED AND EVALUATED AS A LARGE MISSILE IMPACT PROTECTIVE SYSTEM IN ACCORDANCE WITH THE REQUIREMENTS OF THE FLORIDA BUILDING CODE SIXTH EDITION (2017) PER TAS 201, 202, & 203 TEST PROTOCOLS. PANELS ARE APPROVED FOR USE THROUGHOUT THE STATE OF FLORIDA, INCLUDING WITHIN THE HIGH VELOCITY HURRICANE ZONE (HVHZ) COMPRISED OF MIAMI-DADE & BROWARD COUNTIES.
 - NO 33-1/3% INCREASE IN ALLOWABLE STRESS HAS BEEN USED IN THE DESIGN OF THIS PRODUCT.
 - POSITIVE AND NEGATIVE DESIGN PRESSURES CALCULATED FOR USE WITH THIS SYSTEM SHALL BE DETERMINED BY OTHERS ON A JOB-SPECIFIC BASIS IN ACCORDANCE WITH THE GOVERNING CODE. SITE-SPECIFIC PRESSURE REQUIREMENTS AS DETERMINED IN ACCORDANCE WITH ASCE 7-10 AND CHAPTER 1609 OF THE FLORIDA BUILDING CODE SHALL BE LESS THAN OR EQUAL TO THE POSITIVE OR NEGATIVE DESIGN PRESSURE CAPACITY VALUES LISTED HEREIN FOR ANY ASSEMBLY AS SHOWN.
 - DESIGN PRESSURES NOTED HEREIN ARE BASED ON MAXIMUM TESTED PRESSURES DIVIDED BY A 1.5 SAFETY FACTOR.
 - THE SYSTEM DETAILED HEREIN IS GENERIC AND DOES NOT PROVIDE INFORMATION FOR A SPECIFIC SITE. IF SITE CONDITIONS DEVIATE FROM THE CONDITIONS DETAILED HEREIN, A LICENSED ENGINEER OR REGISTERED ARCHITECT SHALL PREPARE SITE SPECIFIC DOCUMENTS TO BE USED IN CONJUNCTION WITH THIS DOCUMENT.
 - THE ADEQUACY OF THE EXISTING STRUCTURE TO WITHSTAND SUPERIMPOSED LOADS IS OUTSIDE THE SCOPE OF THIS CERTIFICATION AND SHALL BE VERIFIED BY OTHERS.
 - CLEAR POLYCARBONATE STORM PANELS (FULL, HALF, & DOUBLE-WIDE) MAY VARY IN "COVERAGE" WIDTH UP TO THE RESPECTIVE MAXIMA SHOWN HEREIN, PROVIDED THAT THE PANEL PROFILE HEIGHT BE MAINTAINED. PANELS SHALL BE MOUNTED WITH FASTENERS OR STUDS AT MAXIMUM SPACING SHOWN FOR EACH PROFILE.
 - ALL POLYCARBONATE PANELS SHALL BE MANUFACTURED BY TRANSPARENT PROTECTION SYSTEMS, INC.
 - THIS PRODUCT APPROVAL IS FOR THE USE OF CLEAR POLYCARBONATE PANELS ONLY. ALL POLYCARBONATE PANELS SHALL BE EXTRUDED WITH THICKNESS $t=0.100"$ ($\pm 0.010"$) AND SHALL BE MANUFACTURED FROM 100% SYNTHETIC THERMOPLASTIC POLYMER RESIN (UV STABILIZED). ANY PLASTIC MATERIAL TO BE USED IN THE HVHZ MUST DEMONSTRATE COMPLIANCE WITH SECTION 2615 OF THE BUILDING CODE SPECIFIED ABOVE. TYPICAL TENSILE STRENGTH $F_y=8.908$ KSI, FLEXURAL STRENGTH $F_{by}=12.90$ KSI, & FLEXURAL MODULUS IS 328.7 KSI.
 - ALL EXTRUSIONS SHALL BE 6063-T6 ALUMINUM ALLOY, U.N.O.
 - PANELS SHALL BE PERMANENTLY LABELED WITH A MINIMUM OF ONE LABEL PER PANEL CONTAINING THE FOLLOWING:
 TRANSPARENT PROTECTION SYSTEMS, INC.
 633 DUNKSFERRY ROAD
 BENSLEM, PA 19020
 ASTM E330, E1886 & E1996
 PRODUCT APPROVAL NUMBER
 - STORM PANELS HAVE BEEN DESIGNED AND TESTED TO THE MAXIMUM SPANS AND CORRESPONDING LOADS SHOWN HEREIN. REFERENCE CONSTRUCTION TESTING CORPORATION (CTC OF MIAMI, FL) TEST REPORTS #04-009-FE-FBC & #04-009-LE-FBC, AS WELL AS HURRICANE TEST LAB (HTL OF RIVIERA BEACH, FL) TEST REPORTS #0239-0107-05, #0239-1013-07, & #0239-0312-06.
 - TOP & BOTTOM MOUNTING SECTIONS MAY BE INTERCHANGED AS FIELD CONDITIONS DICTATE. PANELS MAY BE MOUNTED VERTICALLY OR HORIZONTALLY AS APPLICABLE.
 - USE OF KEYHOLE WASHERS IS OPTIONAL IN CONJUNCTION WITH ANY MOUNTING CONDITION. HOLES MAY BE FIELD DRILLED IN PANELS AT $\varnothing 3/8"$ (OR $\varnothing 5/8"$ WITH KEYHOLE WASHER) WITH ANY FASTENER TYPE. WASHERED WINGNUTS SHALL HAVE 0.865" MINIMUM WASHER DIAMETER.
 - ALL BOLTS & WASHERS SHALL BE ZINC COATED STEEL, GALVANIZED STEEL, OR STAINLESS STEEL WITH A MINIMUM TENSILE YIELD STRENGTH OF 60 KSI.
- *NOTE: FOR ALTERNATE ARCH TOP INSTALLATIONS, THE TOP TRACK OR U-HEADER SHALL BE CUT INTO 6" MINIMUM ADJACENT SEGMENTS. EACH SEGMENT SHALL HAVE ANCHORS SPACED PER THE ANCHOR SCHEDULE, WITH A MINIMUM OF (2) ANCHORS PER SEGMENT. ANCHORS SHALL BE 1-1/2" MIN FROM ENDS OF EACH SEGMENT AND SPACED 3" MINIMUM FROM ADJACENT ANCHORS. FOR STUDED TRACKS ONLY, THERE SHALL BE A MINIMUM OF (1) STUD PER SEGMENT FASTENED TO THE STORM PANEL. STUDS SHALL BE LOCATED 2" MINIMUM FROM ENDS OF EACH SEGMENT.



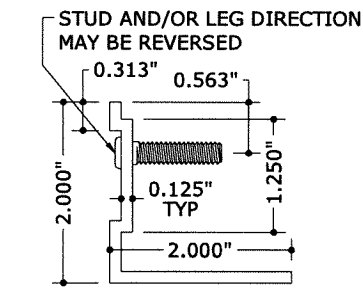
1 FULL PANEL PROFILE
 3" = 1'-0" (SEE GEN NOTE 6)

MOUNT WITH FASTENERS OR STUDS AT 13" O.C. MAX

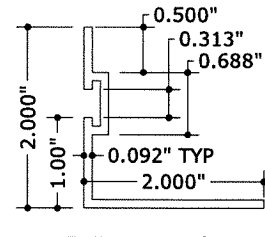


2 HALF PANEL PROFILE
 3" = 1'-0" (SEE GEN NOTE 6)

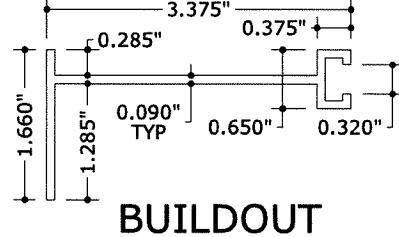
MOUNT WITH FASTENERS OR STUDS AT 6-1/2" O.C. MAX



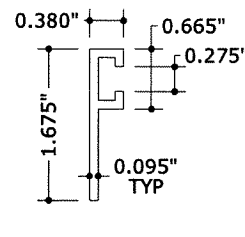
3 STUD ANGLE
 6" = 1'-0"



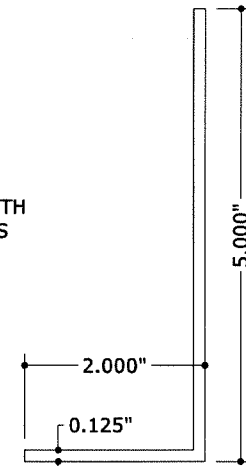
4 REVERSE 'F' ANGLE
 6" = 1'-0"



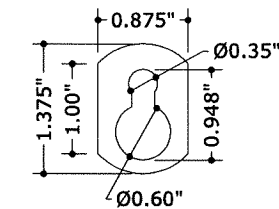
5 BUILDOUT 'F' TRACK
 6" = 1'-0"



6 'F' TRACK
 6" = 1'-0"



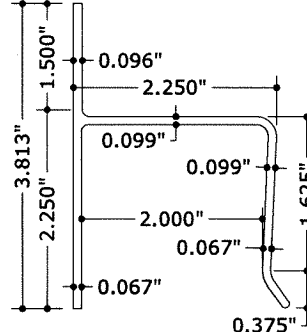
7 CLOSURE ANGLE
 6" = 1'-0"



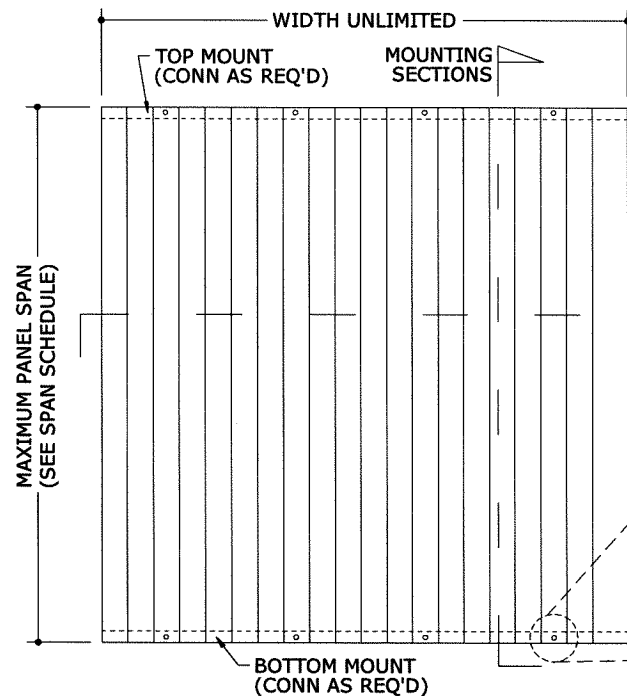
8 KEYHOLE WASHER
 6" = 1'-0"



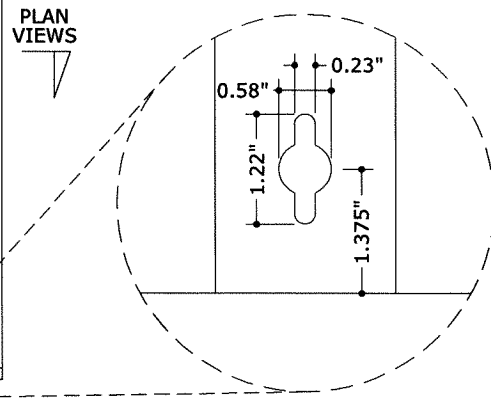
9 WASHERED WINGNUT
 6" = 1'-0"



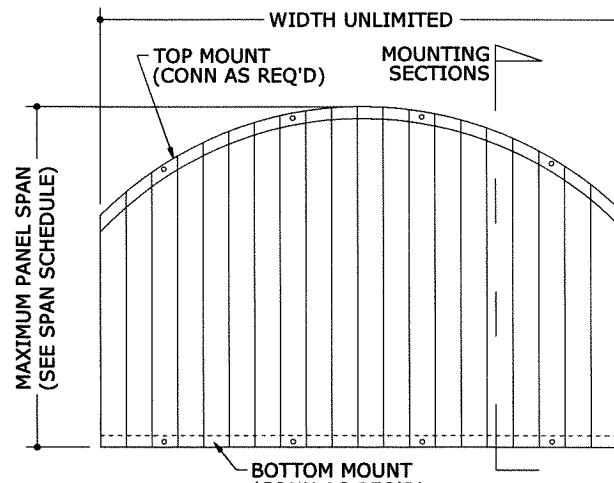
10 'H' HEADER
 6" = 1'-0"



1 TYPICAL ELEVATION
 1 N.T.S.



2 KEYHOLE DETAIL
 1 N.T.S. ALT: FIELD DRILL $\varnothing 3/8"$ HOLE (OR $\varnothing 5/8"$ HOLE W/ KEYHOLE WASHER)



3 ALT. ARCH TOP*
 1 N.T.S.

Transparent Protection Systems, Inc.
 633 Dunksferry Road
 BENSLEM, PA 19020
 CLEARGUARD POLYCARBONATE STORM PANELS
 FOR USE WITHIN AND OUTSIDE THE HVHZ
 FLORIDA STATEWIDE APPROVAL #FL 6416.1

DATE	DRWN/CHKD	REMARKS
8/17/04	CL/FLB	ORIG ISSUE
8/5/05	CL/FLB	2004 FBC
2/6/06	KL/FLB	2007 FBC
12/12/11	EFT/ET	2010/2014 FBC 08-TPR-0007
8/4/17	IRWN/TSB	REV 2017 FBC

THIS DOCUMENT IS THE PROPERTY OF FRANK L. BENNARDO, P.E. AND SHALL NOT BE REPRODUCED, COPIED, OR TRANSMITTED IN ANY FORM OR BY ANY MEANS, ELECTRONIC OR MECHANICAL, INCLUDING PHOTOCOPYING, RECORDING, OR BY ANY INFORMATION STORAGE AND RETRIEVAL SYSTEM. ALTERATIONS, ADAPTATIONS, REPHRASINGS, OR OTHER MARKINGS TO THIS DOCUMENT ARE NOT PERMITTED AND INVALIDATE OUR CERTIFICATION.

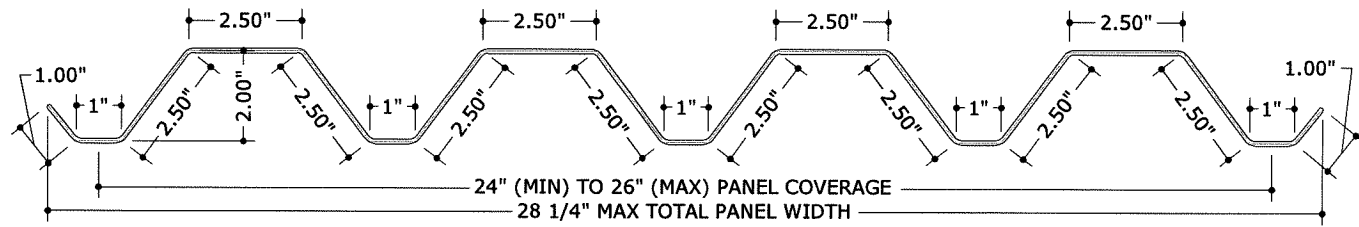
COPYRIGHT FRANK L. BENNARDO P.E.

14-1509

SCALE: -

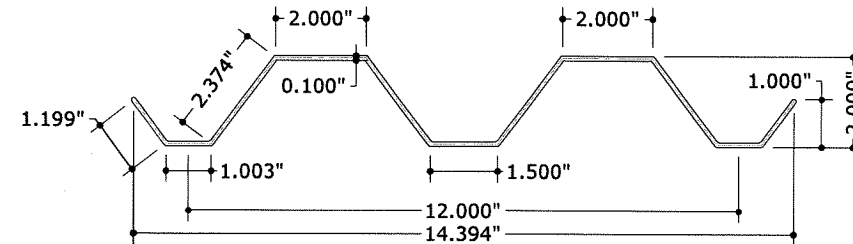
PAGE DESCRIPTION:

08/10/2017 - 3:51pm rickn V:\Projects\14-1509 Update ClearGuard Polycarb Storm Panels (08-TFS-0007) FL6416 2013 FL-Project\WP\2017 FBC Update\14-1509b-Dwg-FL6416 1.dwg



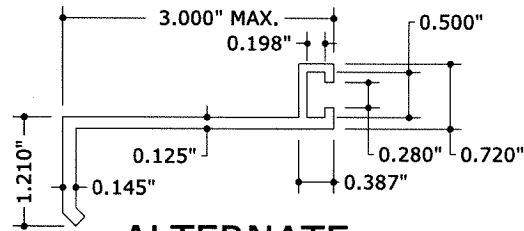
11 "CLEARMAX™" DOUBLE-WIDE PANEL PROFILE
3" = 1'-0" (SEE GEN NOTE 6)

MOUNT WITH FASTENERS OR STUDS AT 13" O.C. MAX

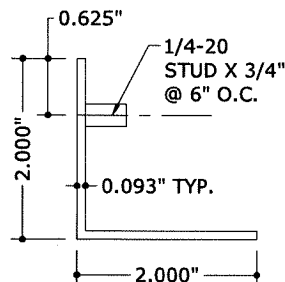


12 ALT. FULL PANEL PROFILE
N.T.S. (SEE GEN NOTE 6)

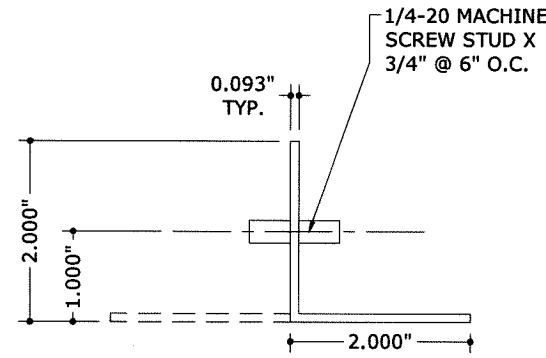
MOUNT WITH FASTENERS OR STUDS AT 13" O.C. MAX



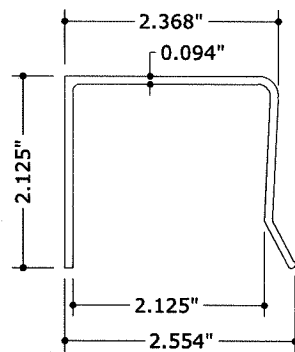
13 ALTERNATE B.O. 'F' TRACK
6" = 1'-0"



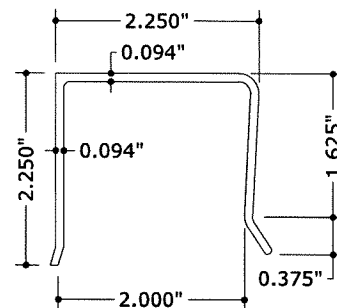
14 ALTERNATE STUD ANGLE
6" = 1'-0"



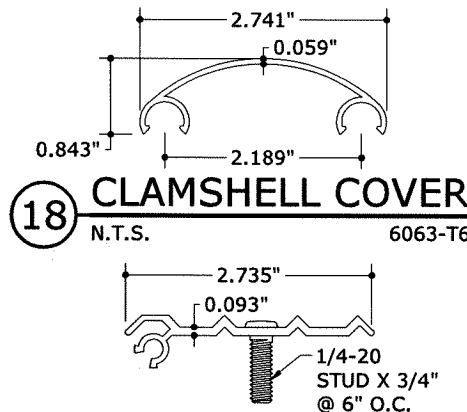
15 STUDDED ANGLE
6" = 1'-0"



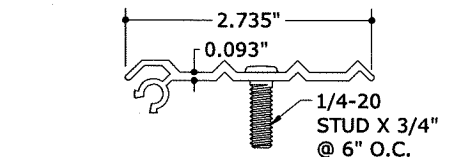
16 U-HEADER
N.T.S. 6063-T6



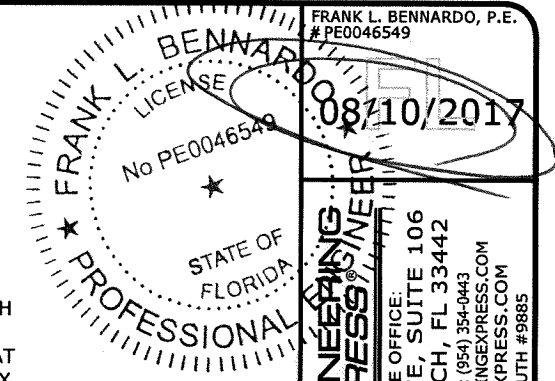
17 ALTERNATE U-HEADER
N.T.S. 6063-T6



18 CLAMSHELL COVER
N.T.S. 6063-T6



19 CLAMSHELL TRACK
N.T.S. 6063-T6



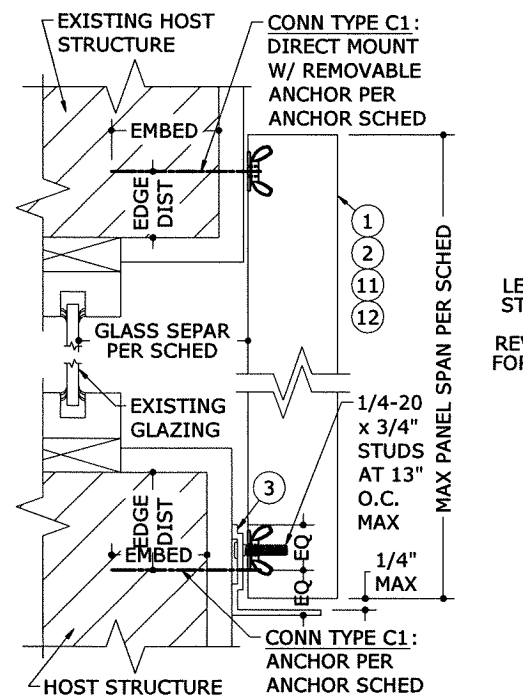
FRANK L. BENNARDO, P.E.
PE0046549
08/10/2017
ENGINEERING EXPRESS, INC.
CORPORATE OFFICE:
160 SW 12th AVE, SUITE 106
DEERFIELD BEACH, FL 33442
P: (954) 354-0660 F: (954) 354-0443
E: HELLO@ENGINEERINGEXPRESS.COM
CERT OF AUTH #9885

TPS Transparent Protection Systems, Inc.
633 Dunkferry Road
BENSALEM, PA 19020
CLEARGUARD POLYCARBONATE STORM PANELS
FOR USE WITHIN AND OUTSIDE THE HVHZ
FLORIDA STATEWIDE APPROVAL #FL 6416.1

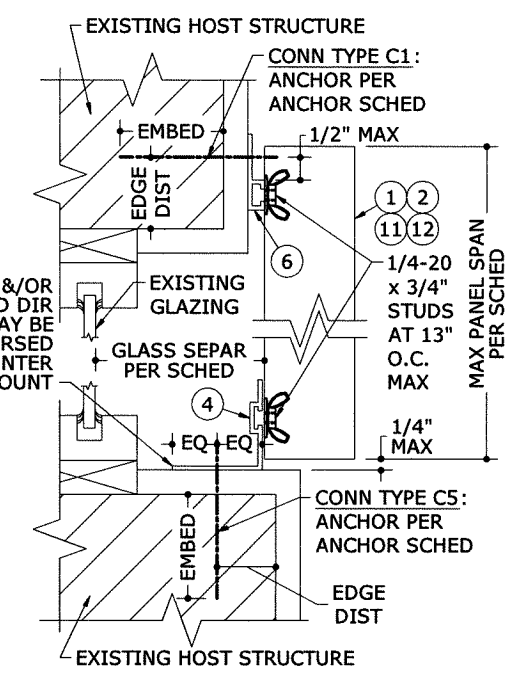
REMARKS	DRWN	CHKD	DATE
ORIG ISSUE	CL	FLB	8/17/04
2004 FBC	CL	FLB	8/5/05
2007 FBC	KL	FLB	2/6/06
2010/2014 FBC 08-TPR-0007	EFT	KL	12/12/11
REV 2017 FBC	TSB	IRWN	8/4/17

THIS DOCUMENT IS THE PROPERTY OF ENGINEERING EXPRESS, INC. IT IS TO BE USED ONLY FOR THE PROJECT AND LOCATION SPECIFICALLY IDENTIFIED HEREIN. ANY REUSE OR MODIFICATION OF THIS DOCUMENT IS STRICTLY PROHIBITED. ANY VIOLATION OF THESE TERMS SHALL BE CONSIDERED A BREACH OF CONTRACT AND SUBJECT TO LEGAL ACTION. COPYRIGHT 2017 ENGINEERING EXPRESS, INC.

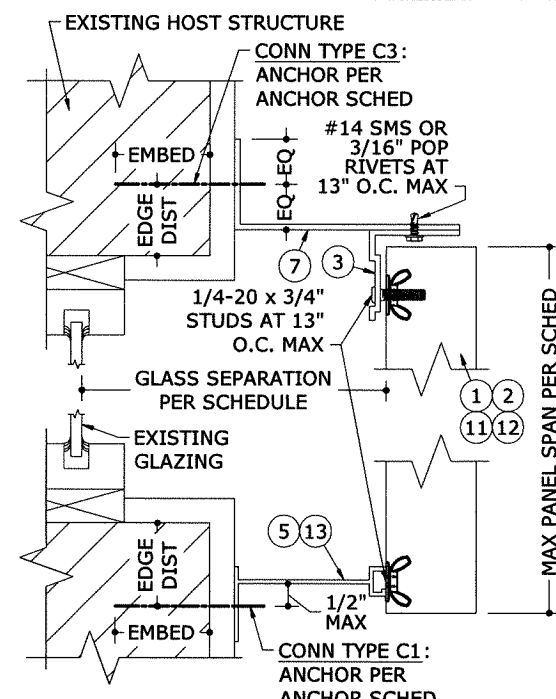
COPYRIGHT FRANK L. BENNARDO P.E.
14-1509
SCALE: _____
PAGE DESCRIPTION: _____
2 OF 5



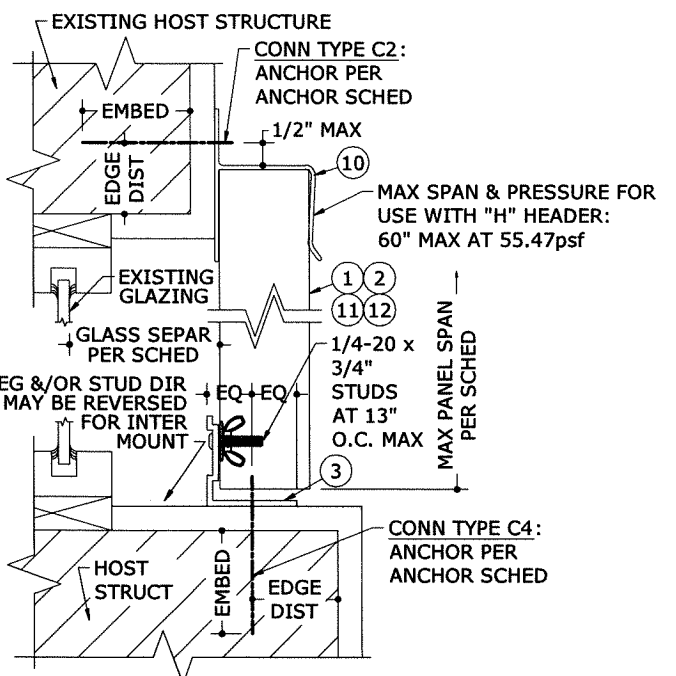
1 MOUNTING SECTION
3 3" = 1'-0" VERT SECTION



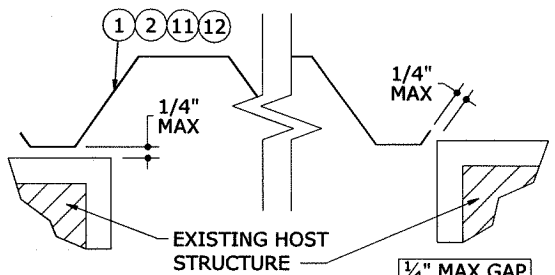
2 MOUNTING SECTION
3 3" = 1'-0" VERT SECTION



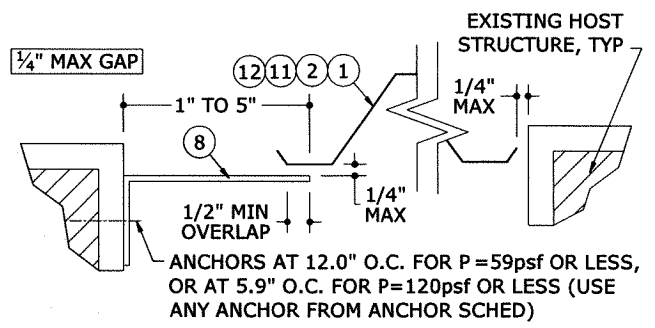
3 MOUNTING SECTION
3 3" = 1'-0" VERT SECTION



4 MOUNTING SECTION
3 3" = 1'-0" VERT SECTION



7 WALL MOUNT CLOSURE
3 3" = 1'-0" PLAN VIEW



8 TRAP MOUNT CLOSURE
3 3" = 1'-0" PLAN VIEW

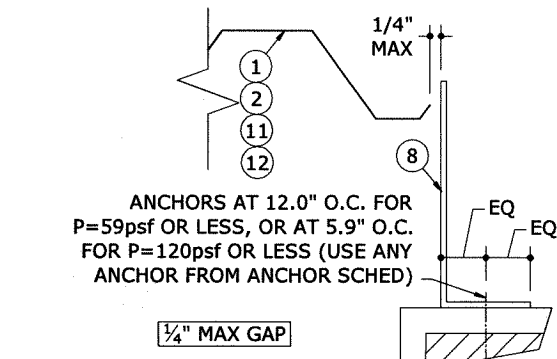
MAXIMUM PANEL SPAN SCHEDULE (POSITIVE CONN.)

LOAD (psf)	MAX SPAN (ft)
±25	6'-5"
±30	6'-2"
±32	6'-1"
±35	5'-11"
±40	5'-9"
±45	5'-7"
±50	5'-5"
±55	5'-3"
±60	5'-2"
±65	5'-1"
±70	5'-0"
±80	4'-9"
±90	4'-7"
±100	4'-4"
±110	3'-11"
±120	3'-7"

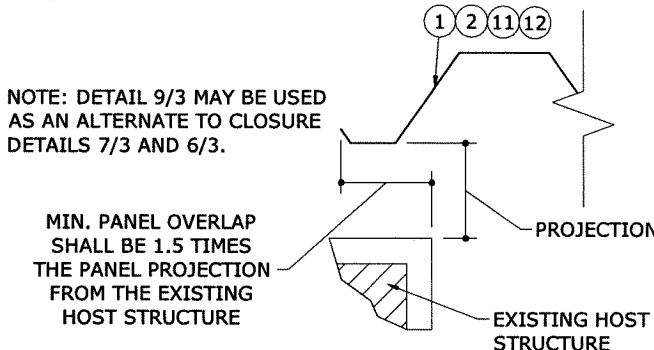
MAXIMUM SPAN SCHEDULE NOTES:

1. SPANS SHOWN IN "MAX PANEL SPAN SCHEDULE" ABOVE ARE MAXIMUM ALLOWABLE SPANS AT EACH RESPECTIVE DESIGN PRESSURE.
2. THIS SCHEDULE MAY BE USED TO DETERMINE MAXIMUM ALLOWABLE SPANS FOR PANELS INSTALLED USING ANY COMBINATION OF MOUNTING EXTRUSIONS INVOLVING A POSITIVE CONNECTION - I.E. ALL INSTALLATIONS WHICH DO NOT INCLUDE AN "H" OR "U" HEADER.
3. WHERE THE "H" HEADER IS USED, THE MAXIMUM ALLOWABLE SPAN IS 5'-0" (60") AND THE MAXIMUM ALLOWABLE PRESSURE IS 55.47psf.
4. WHERE "U" HEADER IS USED, THE MAXIMUM ALLOWABLE SPAN IS 4'-4" (52") AND THE MAXIMUM ALLOWABLE PRESSURE IS +78/-80 PSF.
5. TABLE ABOVE IS VALID FOR PANELS MOUNTED HORIZONTALLY OR VERTICALLY. SPAN DIRECTION IS ALWAYS PERPENDICULAR TO LINE OF ANCHORAGE.

5 CORNER CLOSURE
3 N.T.S. PLAN VIEW



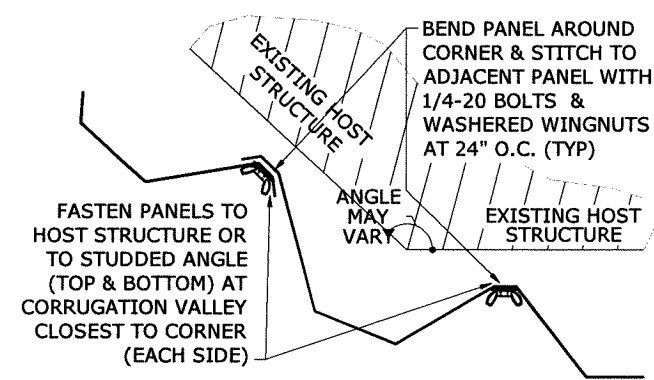
6 BUILD-OUT CLOSURE
3 3" = 1'-0" PLAN VIEW



9 PANEL OVERLAP
3 N.T.S. PLAN VIEW

MAXIMUM SPAN SCHEDULE NOTES:

1. SPANS SHOWN IN "MAX PANEL SPAN SCHEDULE" ABOVE ARE MAXIMUM ALLOWABLE SPANS AT EACH RESPECTIVE DESIGN PRESSURE.
2. THIS SCHEDULE MAY BE USED TO DETERMINE MAXIMUM ALLOWABLE SPANS FOR PANELS INSTALLED USING ANY COMBINATION OF MOUNTING EXTRUSIONS INVOLVING A POSITIVE CONNECTION - I.E. ALL INSTALLATIONS WHICH DO NOT INCLUDE AN "H" OR "U" HEADER.
3. WHERE THE "H" HEADER IS USED, THE MAXIMUM ALLOWABLE SPAN IS 5'-0" (60") AND THE MAXIMUM ALLOWABLE PRESSURE IS 55.47psf.
4. WHERE "U" HEADER IS USED, THE MAXIMUM ALLOWABLE SPAN IS 4'-4" (52") AND THE MAXIMUM ALLOWABLE PRESSURE IS +78/-80 PSF.
5. TABLE ABOVE IS VALID FOR PANELS MOUNTED HORIZONTALLY OR VERTICALLY. SPAN DIRECTION IS ALWAYS PERPENDICULAR TO LINE OF ANCHORAGE.



FRANK L. BENNARDO, P.E.
#PE004639
08/10/2017
No PE004639
FRANK L. BENNARDO, P.E.
PROFESSOR OF ENGINEERING

ENGINEERING EXPRESS
CORPORATE OFFICE
160 SW 12th AVE, SUITE 206
DEERFIELD BEACH, FL 33442
P: (954) 354-0660 F: (954) 354-0443
E: HELLO@ENGINEERINGEXPRESS.COM
ENGINEERINGEXPRESS.COM
CERT OF AUTH # 9885

Transparent Protection Systems, Inc.
TPS
633 Dunksferry Road
BENSALEM, PA 19020
CLEARGUARD POLYCARBONATE STORM PANELS
FOR USE WITHIN AND OUTSIDE THE HVHZ
FLORIDA STATEWIDE APPROVAL #FL 6416.1

DRWN	CHKD	DATE
CL	FLB	8/7/04
CL	FLB	8/5/05
KL	FLB	2/6/06
EFT	KL	12/12/11
TSB	IRWN	8/4/17

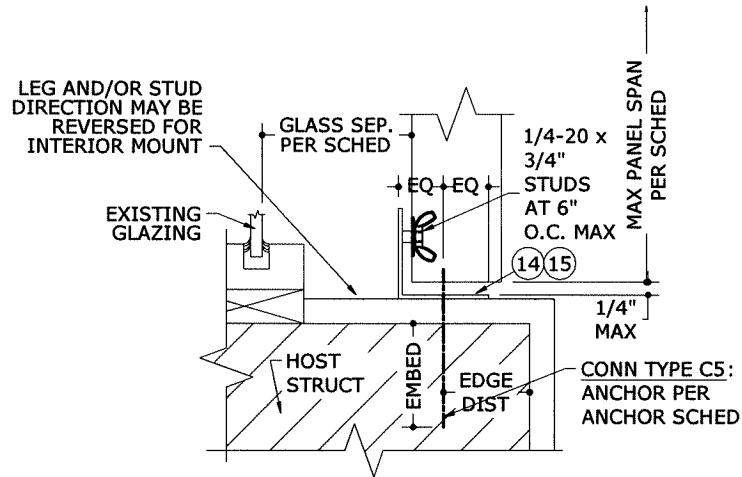
REMARKS
2004 FBC
2007 FBC
2010/2014 FBC 08-TPR-0007 EFT
REV 2017 FBC
THIS DOCUMENT IS THE PROPERTY OF FRANK L. BENNARDO, P.E. AND SHALL NOT BE REPRODUCED OR TRANSMITTED IN ANY FORM OR BY ANY MEANS, ELECTRONIC OR MECHANICAL, INCLUDING PHOTOCOPYING, RECORDING, OR BY ANY INFORMATION STORAGE AND RETRIEVAL SYSTEM. WITHOUT THE WRITTEN PERMISSION OF FRANK L. BENNARDO, P.E. THIS DOCUMENT IS NOT PERMITTED AND INVALIDATE OUR CERTIFICATION.

COPYRIGHT FRANK L. BENNARDO P.E.

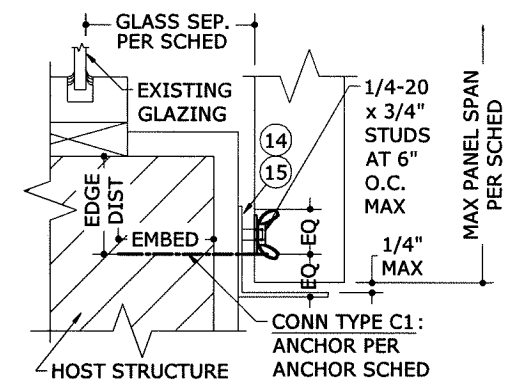
14-1509
SCALE:
PAGE DESCRIPTION:
3 OF 5

V:\Projects\14-1509 Update ClearGuard Polycarb Storm Panels (08-TPS-0007) FL6416 2013 FL-Project\WP2017 FBC Update\14-1509b-Dwg-FL6416.1.dwg

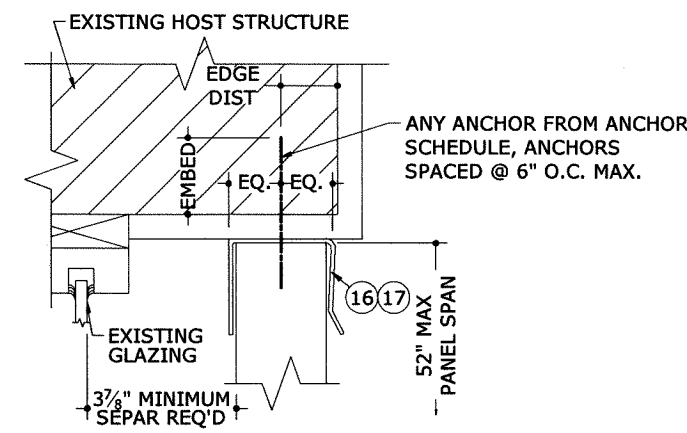
08/10/2017 - 3:51pm rickn



1
4 MOUNTING SECTION
3" = 1'-0" VERT SECTION

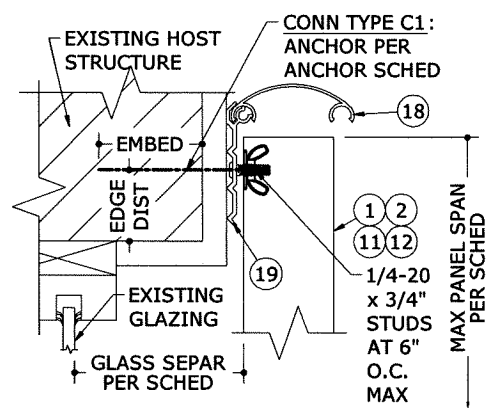


2
4 MOUNTING SECTION
3" = 1'-0" VERT SECTION

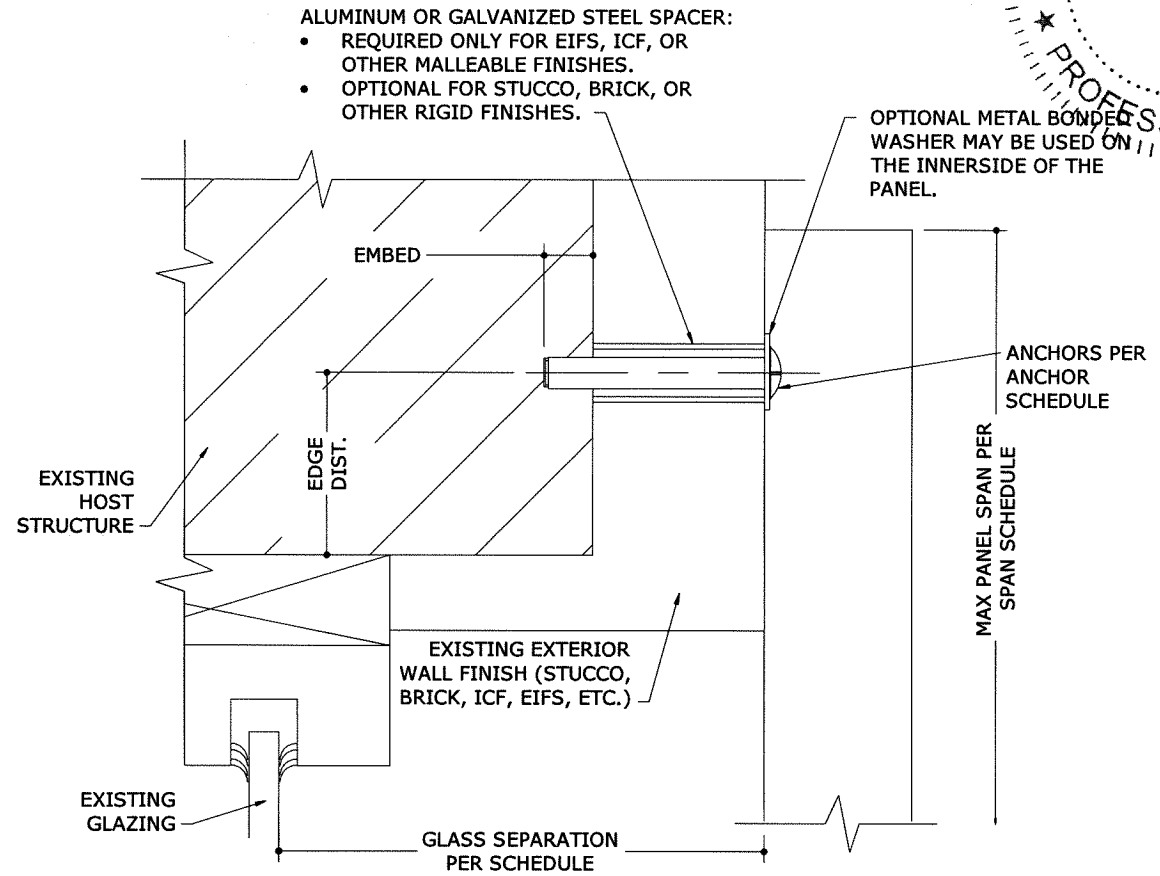


3
4 MOUNTING SECTION
N.T.S. VERT SECTION

NOTE: MAXIMUM SPAN AND PRESSURE FOR USE WITH 'U' HEADERS: 52" MAX PANEL SPAN, +78/-80 PSF MAX DESIGN PRESSURE



4
4 MOUNTING SECTION
N.T.S. VERT SECTION



NOTE: SHUTTER SYSTEM MAY BE ANCHORED THROUGH EXTERIOR WALL FINISH TO HOST STRUCTURE WITH ANY MOUNTING CONDITION SHOWN HEREIN.

5
4 MOUNTING SECTION THRU EXTERIOR WALL FINISH (BRICK, ICF, EIFS, ETC.)
N.T.S. VERT SECTION

FRANK L. BENNARDO, P.E.
#PE0046549
08/10/2017
STATE OF FLORIDA
PROFESSIONAL ENGINEER
ENGINEERING EXPRESS
CORPORATE OFFICE:
160 SW 12th AVE, SUITE 106
DEERFIELD BEACH, FL 33442
P: (954) 354-0660 F: (954) 354-0443
E: HELLO@ENGINEERINGEXPRESS.COM
ENGINEERINGEXPRESS.COM
CERT OF AUTH # 9885

Transparent Protection Systems, Inc.
633 Dunkin Ferry Road
BENSALEM, PA 19020
CLEARGUARD POLYCARBONATE STORM PANELS
FOR USE WITHIN AND OUTSIDE THE HVHZ
FLORIDA STATEWIDE APPROVAL #FL 6416.1

REMARKS	DRWN	CHKD	DATE
ORIG ISSUE	CL	FLB	8/17/04
2004 FBC	CL	FLB	8/5/05
2010/2014 FBC 08-TPR-0007	KL	FLB	2/6/06
REV 2017 FBC	TSB	IRWN	12/12/11
REV 2017 FBC	TSB	IRWN	8/4/17

THIS DOCUMENT IS THE PROPERTY OF FRANK L. BENNARDO, P.E. AND SHALL NOT BE REPRODUCED OR TRANSMITTED IN ANY FORM OR BY ANY MEANS, ELECTRONIC OR MECHANICAL, INCLUDING PHOTOCOPYING, RECORDING, OR BY ANY INFORMATION STORAGE AND RETRIEVAL SYSTEM. ANY UNAUTHORIZED USE OF THIS DOCUMENT IS PROHIBITED AND SHALL BE SUBJECT TO LEGAL ACTION. TO THIS DOCUMENT ARE NOT PERMITTED AND INVALIDATE OUR CERTIFICATION.

COPYRIGHT FRANK L. BENNARDO P.E.

14-1509
SCALE:
PAGE DESCRIPTION:
4

ANCHOR SCHEDULE

HOST STRUCT.	ANCHOR	LOAD (psf)	2" MIN EDGE DISTANCE															
			Spans Up To 4'-0"					Spans Up To 6'-0"					Spans Up To 7'-6"					
			CONN TYPE					CONN TYPE					CONN TYPE					
			C1	C2	C3	C4	C5	C1	C2	C3	C4	C5	C1	C2	C3	C4	C5	
CONCRETE	1/4" ELCO ULTRACON OR ITW ATT TAPCON WITH 1-3/4" EMBED (3000 PSI MIN CONC)	42	13.0"	13.0"	13.0"	13.0"	13.0"	13.0"	13.0"	13.0"	13.0"	13.0"	13.0"	13.0"	13.0"	13.0"	13.0"	13.0"
		47	13.0"	13.0"	13.0"	13.0"	13.0"	13.0"	13.0"	13.0"	13.0"	13.0"	13.0"	13.0"	13.0"	13.0"	13.0"	13.0"
		53	13.0"	13.0"	13.0"	13.0"	13.0"	13.0"	13.0"	13.0"	13.0"	13.0"	13.0"	13.0"	13.0"	13.0"	13.0"	13.0"
		65	13.0"	13.0"	13.0"	13.0"	13.0"	13.0"	13.0"	13.0"	13.0"	13.0"	13.0"	13.0"	13.0"	13.0"	13.0"	13.0"
		120	13.0"	7.9"	6.2"	13.0"	8.5"	5.4"	5.3"	4.1"	5.1"	5.7"	4.3"	4.2"	3.3"	4.1"	4.5"	
	1/4" ELCO PANELMATE WITH 1-3/4" MIN EMBED (3350 PSI MIN CONC)	42	13.0"	13.0"	13.0"	13.0"	13.0"	13.0"	13.0"	13.0"	13.0"	13.0"	13.0"	13.0"	13.0"	13.0"	13.0"	13.0"
		47	13.0"	13.0"	13.0"	13.0"	13.0"	13.0"	13.0"	13.0"	13.0"	13.0"	13.0"	13.0"	13.0"	13.0"	13.0"	13.0"
		53	13.0"	13.0"	13.0"	13.0"	13.0"	13.0"	13.0"	13.0"	13.0"	13.0"	13.0"	13.0"	13.0"	13.0"	13.0"	13.0"
		65	13.0"	13.0"	13.0"	13.0"	13.0"	13.0"	13.0"	13.0"	13.0"	13.0"	13.0"	13.0"	13.0"	13.0"	13.0"	13.0"
		120	13.0"	10.1"	7.9"	13.0"	10.8"	6.9"	6.8"	5.3"	6.5"	7.2"	5.5"	5.4"	4.2"	5.2"	5.8"	
	1/4-20 ALL POINTS SOLID- SET WITH 7/8" MIN EMBED (3000 PSI MIN CONC)	42	13.0"	13.0"	13.0"	13.0"	13.0"	13.0"	13.0"	13.0"	13.0"	13.0"	13.0"	13.0"	13.0"	13.0"	13.0"	13.0"
		47	13.0"	13.0"	13.0"	13.0"	13.0"	13.0"	13.0"	13.0"	13.0"	13.0"	13.0"	13.0"	13.0"	13.0"	13.0"	13.0"
53		13.0"	13.0"	13.0"	13.0"	13.0"	13.0"	13.0"	13.0"	13.0"	13.0"	13.0"	13.0"	13.0"	13.0"	13.0"	13.0"	
65		13.0"	13.0"	13.0"	13.0"	13.0"	13.0"	13.0"	13.0"	13.0"	13.0"	13.0"	13.0"	13.0"	13.0"	13.0"	13.0"	
120		13.0"	8.0"	6.2"	13.0"	9.9"	5.4"	5.3"	4.1"	5.9"	6.6"	4.3"	4.3"	3.3"	4.7"	5.3"		
1/4-20 POWERS CALK-IN WITH 7/8" MIN EMBED (3000 PSI MIN CONC)	42	13.0"	13.0"	13.0"	13.0"	13.0"	13.0"	13.0"	13.0"	13.0"	13.0"	13.0"	13.0"	13.0"	13.0"	13.0"	13.0"	
	47	13.0"	13.0"	13.0"	13.0"	13.0"	13.0"	13.0"	13.0"	13.0"	13.0"	13.0"	13.0"	13.0"	13.0"	13.0"	13.0"	
	53	13.0"	13.0"	13.0"	13.0"	13.0"	13.0"	13.0"	13.0"	13.0"	13.0"	13.0"	13.0"	13.0"	13.0"	13.0"	13.0"	
	65	13.0"	13.0"	13.0"	13.0"	13.0"	13.0"	13.0"	13.0"	13.0"	13.0"	13.0"	13.0"	13.0"	13.0"	13.0"	13.0"	
	120	13.0"	5.0"	3.9"	8.6"	5.0"	3.4"	3.4"	N/A	3.0"	3.3"	N/A	N/A	N/A	N/A	N/A	N/A	

HOST STRUCT.	ANCHOR	LOAD (psf)	2" MIN EDGE DISTANCE															
			Spans Up To 4'-0"					Spans Up To 6'-0"					Spans Up To 7'-6"					
			CONN TYPE					CONN TYPE					CONN TYPE					
			C1	C2	C3	C4	C5	C1	C2	C3	C4	C5	C1	C2	C3	C4	C5	
HOLLOW BLOCK (ASTM C-90 MIN)	1/4" ELCO ULTRACON WITH 1-1/4" EMBED	42	13.0"	13.0"	13.0"	13.0"	13.0"	13.0"	13.0"	13.0"	13.0"	13.0"	13.0"	13.0"	13.0"	13.0"	13.0"	13.0"
		47	13.0"	13.0"	13.0"	13.0"	13.0"	13.0"	13.0"	13.0"	13.0"	13.0"	13.0"	13.0"	13.0"	13.0"	13.0"	
		53	13.0"	13.0"	13.0"	13.0"	13.0"	13.0"	13.0"	13.0"	13.0"	13.0"	13.0"	13.0"	13.0"	13.0"	13.0"	
		65	12.9"	12.9"	12.9"	13.0"	13.0"	8.6"	3.2"	N/A	9.0"	9.0"	6.9"	N/A	N/A	7.2"	3.3"	
		120	7.0"	N/A	N/A	7.3"	3.3"	N/A	N/A	N/A	9.0"	N/A	N/A	N/A	N/A	N/A	N/A	N/A
	1/4" ELCO PANELMATE WITH 1-1/4" MIN EMBED	42	13.0"	13.0"	13.0"	13.0"	13.0"	13.0"	13.0"	13.0"	13.0"	13.0"	13.0"	13.0"	13.0"	13.0"	13.0"	13.0"
		47	13.0"	13.0"	13.0"	13.0"	13.0"	13.0"	13.0"	13.0"	13.0"	13.0"	13.0"	13.0"	13.0"	13.0"	13.0"	13.0"
		53	13.0"	13.0"	13.0"	13.0"	13.0"	13.0"	13.0"	13.0"	13.0"	13.0"	13.0"	13.0"	13.0"	13.0"	13.0"	13.0"
		65	13.0"	13.0"	13.0"	13.0"	13.0"	13.0"	6.5"	5.0"	13.0"	13.0"	5.2"	4.0"	12.4"	6.1"		
		120	13.0"	5.3"	4.1"	12.6"	6.2"	3.6"	3.5"	N/A	3.7"	4.1"	N/A	N/A	N/A	N/A	N/A	N/A
	1/4-20 ALL POINTS SOLID- SET WITH 7/8" MIN EMBED	42	13.0"	13.0"	13.0"	13.0"	13.0"	13.0"	13.0"	13.0"	13.0"	13.0"	13.0"	13.0"	13.0"	13.0"	13.0"	13.0"
		47	13.0"	13.0"	13.0"	13.0"	13.0"	13.0"	13.0"	13.0"	13.0"	13.0"	13.0"	13.0"	13.0"	13.0"	13.0"	13.0"
53		13.0"	13.0"	13.0"	13.0"	13.0"	13.0"	13.0"	13.0"	13.0"	13.0"	13.0"	13.0"	13.0"	13.0"	13.0"	13.0"	
65		13.0"	13.0"	13.0"	13.0"	13.0"	13.0"	13.0"	13.0"	13.0"	13.0"	13.0"	13.0"	13.0"	13.0"	13.0"	13.0"	
120		13.0"	5.3"	4.2"	10.0"	5.5"	3.6"	3.6"	N/A	3.3"	3.7"	N/A	N/A	N/A	N/A	N/A	N/A	

HOST STRUCT.	ANCHOR	LOAD (psf)	3/4" MIN EDGE DISTANCE														
			Spans Up To 4'-0"					Spans Up To 6'-0"					Spans Up To 7'-6"				
			CONN TYPE					CONN TYPE					CONN TYPE				
			C1	C2	C3	C4	C5	C1	C2	C3	C4	C5	C1	C2	C3	C4	C5
WOOD (G=0.55 MIN)	1/4" TAPCON (ELCO OR ITW) OR #14 WOOD SCREW W/ 1-1/2" EMBED	42	13.0"	13.0"	13.0"	13.0"	13.0"	13.0"	13.0"	13.0"	13.0"	13.0"	13.0"	13.0"	13.0"	13.0"	13.0"
		47	13.0"	13.0"	13.0"	13.0"	13.0"	13.0"	13.0"	13.0"	13.0"	13.0"	13.0"	13.0"	13.0"	13.0"	13.0"
		53	13.0"	13.0"	13.0"	13.0"	13.0"	13.0"	13.0"	13.0"	13.0"	13.0"	13.0"	13.0"	13.0"	13.0"	13.0"
		65	13.0"	13.0"	13.0"	13.0"	13.0"	13.0"	13.0"	13.0"	13.0"	13.0"	13.0"	13.0"	13.0"	13.0"	13.0"
		120	13.0"	5.6"	4.4"	6.1"	4.2"	3.8"	3.8"	2.9"	2.6"	2.8"	3.1"	3.0"	2.3"	2.1"	2.2"
	1/4" ELCO PANELMATE (FEMALE, MALE, OR PLUS) W/ 1-7/8" MIN EMBED	42	13.0"	13.0"	13.0"	13.0"	13.0"	13.0"	13.0"	13.0"	13.0"	13.0"	13.0"	13.0"	13.0"	13.0"	13.0"
		47	13.0"	13.0"	13.0"	13.0"	13.0"	13.0"	13.0"	13.0"	13.0"	13.0"	13.0"	13.0"	13.0"	13.0"	13.0"
		53	13.0"	13.0"	13.0"	13.0"	13.0"	13.0"	13.0"	13.0"	13.0"	13.0"	13.0"	13.0"	13.0"	13.0"	13.0"
		65	13.0"	13.0"	13.0"	13.0"	13.0"	13.0"	13.0"	13.0"	13.0"	13.0"	13.0"	13.0"	13.0"	13.0"	13.0"
		120	13.0"	12.3"	9.6"	13.0"	9.6"	8.3"	8.2"	6.4"	5.9"	6.4"	6.7"	6.5"	5.1"	4.7"	5.1"
	7/16" WOOD BUSHING W/ 7/8" MIN EMBED & 1/4-20 S.S. MACHINE SCREW	42	13.0"	13.0"	13.0"	13.0"	13.0"	13.0"	13.0"	13.0"	13.0"	13.0"	13.0"	13.0"	13.0"	13.0"	13.0"
		47	13.0"	13.0"	13.0"	13.0"	13.0"	13.0"	13.0"	13.0"	13.0"	13.0"	13.0"	13.0"	13.0"	13.0"	13.0"
53		13.0"	13.0"	13.0"	13.0"	13.0"	13.0"	13.0"	13.0"	13.0"	13.0"	13.0"	13.0"	13.0"	13.0"	13.0"	
65		13.0"	13.0"	13.0"	13.0"	13.0"	13.0"	13.0"	13.0"	13.0"	13.0"	13.0"	13.0"	13.0"	13.0"	13.0"	
120		11.6"	4.3"	3.4"	11.6"	5.4"	2.9"	2.9"	2.2"	3.2"	3.6"	2.3"	2.3"	N/A	2.5"	2.9"	
1/4" LAG SCREW WITH 2-3/32" MIN THREAD PENETR	42	13.0"	13.0"	13.0"	13.0"	13.0"	13.0"	13.0"	13.0"	13.0"	13.0"	13.0"	13.0"	13.0"	13.0"	13.0"	
	47	13.0"	13.0"	13.0"	13.0"	13.0"	13.0"	13.0"	13.0"	13.0"	13.0"	13.0"	13.0"	13.0"	13.0"	13.0"	
	53	13.0"	13.0"	13.0"	13.0"	13.0"	13.0"	13.0"	13.0"	13.0"	13.0"	13.0"	13.0"	13.0"	13.0"	13.0"	
	65	13.0"	13.0"	13.0"	13.0"	13.0"	13.0"	13.0"	13.0"	13.0"	13.0"	13.0"	13.0"	13.0"	13.0"	13.0"	
	120	13.0"	7.3"	5.7"	6.4"	4.6"	5.0"	4.9"	3.8"	2.9"	3.1"	4.0"	3.9"	3.0"	2.3"	2.5"	

MINIMUM GLASS SEPARATION SCHEDULE

POSITIVE LOAD (psf)	SPAN LESS THAN	MINIMUM SEPARATION AT OR BELOW 30' ABOVE GRADE	MINIMUM SEPARATION AT ELEV > 30' ABOVE GRADE
32	4'-0"	4.23"	1.37"
	4'-9"	4.23"	1.73"
	6'-1"	5.35"	3.00"
40	4'-0"	4.23"	1.46"
	4'-9"	4.23"	1.92"
	5'-9"	5.35"	3.00"
45	4'-0"	4.23"	1.52"
	4'-9"	4.23"	2.03"
	5'-7"	5.35"	3.00"
50	4'-0"	4.23"	1.58"
	4'-9"	4.23"	2.14"
	5'-6"	5.35"	3.00"
60	4'-0"	4.23"	1.69"
	4'-9"	4.23"	2.37"
	5'-3"	5.35"	3.00"
70	4'-0"	4.23"	1.81"
	4'-9"	4.23"	2.60"
	5'-0"	5.35"	3.00"
120	3'-8"	4.23"	1.97"

ANCHOR NOTES:

- FOR ALL CONCRETE ANCHORS, UTILIZE EITHER 1/4" ITW ATT TAPCONS OR 1/4" ELCO ULTRACONS AS SPECIFIED IN THE ANCHOR SCHEDULES.
- "ELCO PANELMATE" ANCHORS MAY BE MALE, FEMALE, OR PANELMATE PLUS, AS ILLUSTRATED HEREIN. HEAD STYLE MAY BE STD 13/32" OR WASHERED 5/8" HEX HEAD.
- ENSURE MINIMUM 2" EDGE DISTANCE FOR ALL ANCHORS TO CONCRETE & TO HOLLOW BLOCK. ENSURE 3/4" EDGE DISTANCE FOR ALL ANCHORS TO WOOD.
- MINIMUM EMBEDMENT SHALL BE AS NOTED IN ANCHOR SCHEDULE. MINIMUM EMBEDMENT AND EDGE DISTANCE EXCLUDES STUCCO, FOAM, BRICK, AND OTHER WALL FINISHES.
- CONCRETE ANCHORS NOTED HEREIN SHALL BE EMBEDDED TO UN-CRACKED CONCRETE ONLY. INSTALL ALL CONCRETE ANCHORS PER MANUFACTURE'S RECOMMENDATIONS.
- WHERE EXISTING STRUCTURE IS WOOD FRAMING, EXISTING CONDITIONS MAY VARY. FIELD VERIFY THAT FASTENERS ARE INTO ADEQUATE WOOD FRAMING MEMBERS, NOT INTO PLYWOOD.
- WHERE ANCHORS FASTEN TO NARROW FACE OF STUD FRAMING, ANCHOR SHALL BE LOCATED IN CENTER OF NOMINAL 2x4 (MIN) WOOD STUD (i.e. 3/4" EDGE DISTANCE IS ACCEPTABLE FOR ANCHORS TO WOOD FRAMING). WOOD STUD SHALL BE "SOUTHERN PINE" G=0.55 OR GREATER DENSITY.
- ANCHOR SCHEDULE APPLIES FOR ALL PRODUCTS CERTIFIED HEREIN, BUT ONLY PROVIDES MAXIMUM ALLOWABLE ANCHOR SPACING. MAXIMUM ALLOWABLE SPANS AND PRESSURES INDICATED IN SPAN SCHEDULE SHALL APPLY.
- MACHINE SCREWS SHALL HAVE MINIMUM OF 1/2" ENGAGEMENT OF THREADS IN BASE ANCHOR AND MAY HAVE EITHER A PAN HEAD, TRUSS HEAD, OR WAFER HEAD ("SIDEWALK BOLT") U.N.O.
- * DESIGNATES REMOVABLE ANCHORS. PANELS SHALL BE MOUNTED DIRECTLY TO THE HOST STRUCTURE ONLY WITH THESE ANCHORS, LOCATED AT KEYHOLES AND LESS THAN OR EQUAL TO ALLOWABLE SPACING SHOWN IN ANCHOR SCHEDULE.
- "N/A" DESIGNATES ANCHOR CONDITIONS WHICH ARE NOT ACCEPTABLE FOR USE.

GLASS SEPARATION SCHEDULE NOTES: